

## ***Removing & Replacing the Autoflo Autosensor***

Switch off the electrical supply to the unit.

Turn off the water supply to the unit.

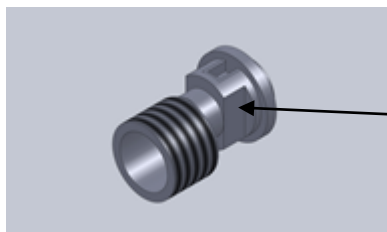
Remove the front cover. The screw is found at the base of the Autosensor on the right hand side of the water outlet.

Disconnect the 3 wires to the terminal block, Live Earth & Neutral.

Remove the retaining screw, which is found in the top left-hand corner.

Pull the unit forward and upwards at the same time. This will reveal the inlet adapter nut.

Using a 13mm spanner open ended. Place the spanner on the flat between the outer cover and black adapter nut, and then undo the inlet adapter nut using a 24mm spanner.



Place 13mm Spanner  
over Flats

Remove the Autosensor unit.

To fit new unit, repeat No. 7. Then secure unit to the backplate using fixing as described in No. 5.

Connect electrical connections.

Switch on water.

Switch on electricity (ensure connection is correct).